



SPRAY CHARACTERISTICS

- Highly uniform and stable distribution across the complete spray pattern with a knife-like cutting edge.
- Maximum impinging force produced with a minimum loss of energy resulting in higher efficiency.
- Tapered ends of the spray pattern make this the best suited to systems set up for overlapping spray patterns.
- Nominal spray angles of 25° and 32°.

CONSTRUCTION AND MATERIALS

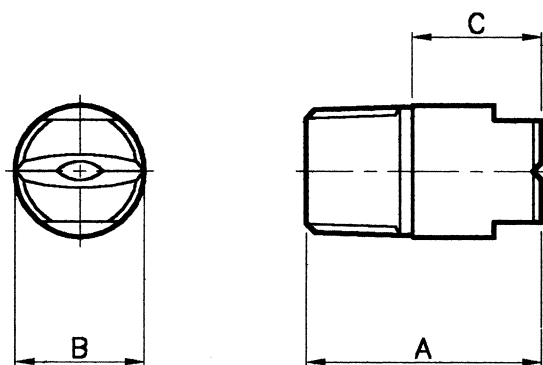
- Available in type 440 Hardened Stainless Steel.
- One piece construction and with 3/8" Male NPT thread

ORDER EXAMPLE

Nozzle Number 344 - 6.

DIMENSIONS AND WEIGHTS

Nozzle	Dimensions (mm)			Weight (g)
	A	B	C	
344	31,8	17,5	17,4	35



Nozzle Height (mm)	Coverage (mm) at 70 Bar.G.	
	25°	32°
200	76	99
225	89	111
250	102	124
275	114	137
300	127	149
325	133	159
350	143	172
400	162	191
450	175	213
500	191	232
550	207	251
600	222	270

Maximum Recommended Pressure: 275 Bar.G.

CAPACITY CHART

NOZZLE NUMBER	Equiv. Orif. Dia. (mm)	FLOW RATE IN LITRES/MIN AT Bar.G.																
		SPRAY ANGLE		40	55	70	85	100	110	125	140	150	165	180	190	200	245	275
		25°	32°															
344-3 344-12	2,8		28,7	33,7	38,2	42,2	45,5	47,7	51,0	53,8	55,7	58,6	61,0	63,6	66,0	70,6	75,6	
344-5 344-14	3,6		43,2	50,7	57,2	63,0	68,2	71,9	76,0	80,0	82,9	87,0	91,0	95,2	99,2	106	113	
344-6 344-15	4,0		57,7	67,8	76,3	84,5	92,5	94,6	103	107	113	117	121	126	134	140	151	
344-7 344-16	4,4		72,3	83,2	95,4	104	116	121	129	134	139	148	152	160	164	178	189	
344-8 344-17	4,8		85,7	102	114	127	135	144	152	160	166	174	182	190	198	212	227	

Contact our Helpline for any special requirements:
Tel: +44 (0) 151 424 6821
Fax: +44 (0) 151 495 1043
e-mail:sales@delavan.co.uk
Web:www.delavan.co.uk

