



SPRAY CHARACTERISTICS

- Produces a uniform, flat spray without hard edges.
- Tapered edges of pattern allow overlapping for even distribution.
- Impact of spray is generally greater with narrower spray angles assuming equal flow rates.
- Orifice is offset 15° to axis of dovetail.

CONSTRUCTION AND MATERIALS

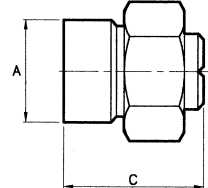
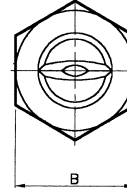
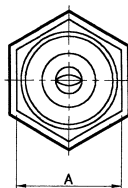
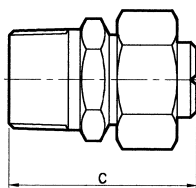
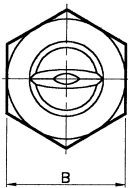
- Dovetail connection nozzle/body for positive alignment.
- 3 piece design with Male BSPT thread or Welding Nipple body, available in:
- Brass.
- Stainless Steel.
- Mild Steel (Welding Nipple body only).
- Longer Welding Nipple bodies available to special order.
- Other materials available to special order.

ORDER EXAMPLE

AD 80-65° Stainless Steel = Tip Only.
 1/2" ADM (Male) 60-80° Brass = Complete Assembly.
 ADW 100-90° Stainless Steel = Welding Assembly.

DIMENSIONS AND WEIGHTS

Assembly Type	Dimensions (mm)			Weight (g)
	A Hex	B Hex	C	
1/2" ADM	28,0	31,8	50,3	150
3/4" ADM	28,0	31,8	50,3	180
ADW	27,0 dia.	31,8	37,6	130



ADM (MALE) ASSEMBLY

WELDING ASSEMBLY

Maximum Recommended Pressure:
 100 Bar.G. (Metal) 7 Bar.G. (Plastic).

CAPACITY CHART

NOZZLE NUMBER	Equiv Orifice Dia. (mm)	FLOW RATE IN LITRES/MIN AT Bar.G.										SPRAY ANGLES (°) @ 2.8 Bar.G.									
		0,7	1,0	2,0	3,0	5	7	10	15	20	0	15	25	40	50	65	80	90	100	110	
AD 10	2,0	1,92	2,28	3,22	3,93	5,1	6,0	7,2	8,84	10,2											
AD 12.5	2,2	2,30	2,90	4,00	4,97	6,5	7,55	9,15	11,15	12,8											
AD 15	2,4	2,84	3,44	4,92	6,16	7,9	9,2	10,7	13,20	15,2								*			
AD 20	2,8	3,80	4,47	6,26	8,05	10,2	12,4	14,7	17,70	20,4										*	
AD 25	3,1	4,60	5,80	8,00	9,94	13,0	15,1	18,3	22,30	25,5											
AD 30	3,6	6,00	6,70	9,80	11,84	15,3	17,9	21,4	26,50	30,4											
AD 40	4,0	7,80	9,40	13,00	15,62	20,8	24,3	28,6	35,40	41,1											
AD 50	4,4	9,60	11,60	16,10	19,89	25,4	30,2	36,2	44,10	51,0											
AD 60	4,8	11,40	13,90	19,20	23,67	30,5	36,2	43,4	52,90	61,2											
AD 70	5,2	13,30	16,10	22,80	27,46	36,1	42,6	50,5	61,80	71,5											
AD 80	5,6	15,10	18,80	25,50	31,72	41,2	48,1	57,2	70,60	81,3											
AD 100	6,4	19,20	22,80	31,70	39,30	50,9	60,5	72,4	88,40	102											
AD 120	7,1	22,90	27,30	38,90	47,40	61,1	72,4	86,3	106	122											
AD 150	7,5	28,80	34,40	48,30	59,19	76,8	90,2	108	132	153											
AD 200	8,8	38,00	48,70	64,40	79,07	102	120	144	175	204											

* Brass Only

Contact our Helpline for any special requirements:
 Tel: +44 (0) 151 424 6821
 Fax: +44 (0) 151 495 1043
 e-mail: sales@delavan.co.uk
 Web: www.delavan.co.uk

