

TYPE BLOW-OFF

SPECIAL PURPOSE

DELAVAN
Spray Technologies



SPRAY CHARACTERISTICS

- Directs compressed air or steam in a wide, thin air sheet.
- Designed with a relatively large slotted orifice.

CONSTRUCTION AND MATERIALS

- Available in Brass and Stainless Steel (recommended for steam applications).
- 3 piece construction, body, tip and cap.
- The tip has two flats to facilitate alignment.
- Optional body is available in a variety of threads.
- Thread sizes are Male BSPT and Female BSPP.
- Other materials available to special order.

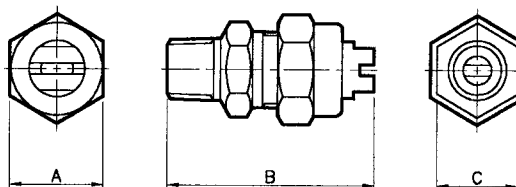
ORDER EXAMPLE

No. 4 Blow-Off Brass = Tip Only.

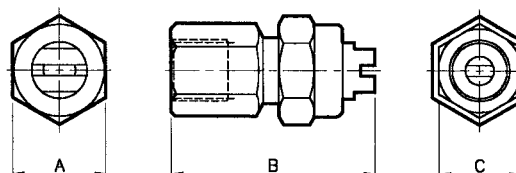
1/4" Male No. 3 Blow-Off Stainless Steel = Complete Assembly.

DIMENSIONS AND WEIGHTS

Thread Type	Assembly Type	Dimensions (mm)			Weight (g)
		A Hex	B	C Hex	
1/8	Female	20,8	46,0	18,0	69
1/4	Male	20,8	46,0	18,0	61
1/4	Female	20,8	46,0	18,0	68
3/8	Male	20,8	46,0	18,0	63
3/8	Female	20,8	46,0	20,8	69



BLOW-OFF (MALE) ASSEMBLY



BLOW-OFF (FEMALE) ASSEMBLY

Maximum Recommended
Pressure: 14 Bar.G.

AIR CAPACITY CHART

NOZZLE NUMBER	AIR FLOW IN M ³ /HOUR AT Bar.G.				APPROX. SPRAY ANGLES (°)
	0,7	2	4	7	
No. 1	1,1	2,4	4	6,4	75°
No. 2	2,1	4,6	7,5	11,6	55°
No. 3	6,2	12,2	19,5	28,4	60°
No. 4	10,0	20,1	32,3	47,6	100°
No. 5	22,4	46,7	72,2	105,5	60°

STEAM CAPACITY CHART

NOZZLE NUMBER	STEAM FLOW IN Kg/HOUR AT Bar.G.				APPROX. SPRAY ANGLES (°)
	0,7	2	4	7	
No. 1	0,54	1,27	2,08	3,72	75°
No. 2	1,27	2,35	4,08	7,26	55°
No. 3	3,5	6,12	10,3	17,2	60°
No. 4	5,76	10,2	17,2	29,3	100°
No. 5	12,7	22,9	38,6	64,9	60°

Contact our Helpline for
any special requirements:
Tel: +44 (0) 151 424 6821
Fax: +44 (0) 151 495 1043
e-mail: sales@delavan.co.uk
Web: www.delavan.co.uk

