

SPRAY CHARACTERISTICS

- Produces a uniform, flat spray without hard edges.
- Tapered edges of pattern allow overlapping for even distribution.
- Impact of spray is generally greater with narrower spray angles assuming equal flow rates.

CONSTRUCTION AND MATERIALS

- 3 piece design with Male BSPT thread or Welding Nipple body, available in:
 - Brass.
 - Stainless Steel.
 - Mild Steel (Welding Nipple body only).
 - Other materials available to special order.

ORDER EXAMPLE

LA 80-65° Stainless Steel = Tip Only.

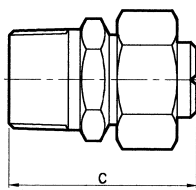
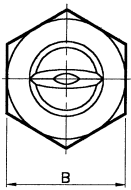
1/2" LAM 60-80° Brass = Complete Assembly.

LAW 100-90° Stainless Steel = Welding Assembly.

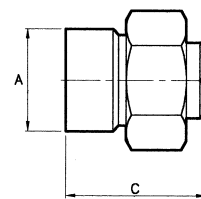
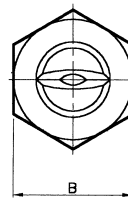
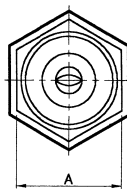


DIMENSIONS AND WEIGHTS

Assembly Type	Dimensions (mm)			Weight (g)
	A Hex	B Hex	C	
1/2" LAM	28,0	31,8	50,3	150
3/4" LAM	28,0	31,8	50,3	180
LAW	27,0 dia.	31,8	37,6	130



LAM (MALE) ASSEMBLY



LAW WELDING ASSEMBLY

Maximum Recommended Pressure:
100 Bar.G. (Metal) 7 Bar.G. (Plastic).

CAPACITY CHART

NOZZLE NUMBER	Equiv Orifice Dia. (mm)	FLOW RATE IN LITRES/MIN AT Bar.G.										SPRAY ANGLES (°) @ 2.8 Bar.G.									
		0,7	1,0	2,0	3,0	5	7	10	15	20	0	15	25	40	50	65	80	90	100	110	
LA 10	2,0	1,92	2,28	3,22	3,93	5,1	6,0	7,2	8,84	10,2											
LA 12.5	2,2	2,30	2,90	4,00	4,97	6,5	7,55	9,15	11,15	12,8											
LA 15	2,4	2,84	3,44	4,92	6,16	7,9	9,2	10,7	13,20	15,2									*		
LA 20	2,8	3,80	4,47	6,26	8,05	10,2	12,4	14,7	17,70	20,4									*		
LA 25	3,1	4,60	5,80	8,00	9,94	13,0	15,1	18,3	22,30	25,5											
LA 30	3,6	6,00	6,70	9,80	11,84	15,3	17,9	21,4	26,50	30,4											
LA 40	4,0	7,80	9,40	13,00	15,62	20,8	24,3	28,6	35,40	41,1											
LA 50	4,4	9,60	11,60	16,10	19,89	25,4	30,2	36,2	44,10	51,0											
LA 60	4,8	11,40	13,90	19,20	23,67	30,5	36,2	43,4	52,90	61,2											
LA 70	5,2	13,30	16,10	22,80	27,46	36,1	42,6	50,5	61,80	71,5											
LA 80	5,6	15,10	18,80	25,50	31,72	41,2	48,1	57,2	70,60	81,3											
LA 100	6,4	19,20	22,80	31,70	39,30	50,9	60,5	72,4	88,40	102											
LA 120	7,1	22,90	27,30	38,90	47,40	61,1	72,4	86,3	106	122											
LA 150	7,5	28,80	34,40	48,30	59,19	76,8	90,2	108	132	153											
LA 200	8,8	38,00	48,70	64,40	79,07	102	120	144	175	204											

* Brass Only

FLAT SPRAY

TYPE LA

Contact our Helpline for any special requirements:
Tel: +44 (0) 151 424 6821
Fax: +44 (0) 151 495 1043
e-mail: sales@delavan.co.uk
Web: www.delavan.co.uk

