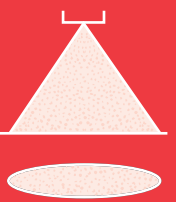




# Airless

WELCOME TO DELAVAN

Meeting the **challenges**  
of new  
**industries** and *NEW markets*

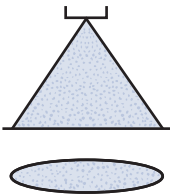


**DELAVAN**  
Spray Technologies

*These units are purposely designed items for use in paint spraying and coating applications. Additional special purpose air assisted tips are also shown for reference.*

	<b>Nozzle Type</b>	<b>Spray Characteristics</b>	<b>Spray Angles</b>	<b>Basic Features</b>	<b>Flow Range. L/Min @ 70 Bar.G.</b>	<b>Page No.</b>
<b>AIRLESS</b>	AIRLESS TIP	Uniform flat spray pattern with tapered edges and fine atomisation.	15° – 110°	Flanged tip design for use with standard handguns.	0,076 – 21,6	H.1
	PRE-ORIFICE	Metering orifice to improve spray quality of airless tips.	0°	Flat disc for use with airless tips and standard handguns.	–	H.2
	TURNAFLO	–	–	High pressure adaptor for use with Turnatips. Rotates through 180° for ease of tip cleaning.	–	H.3
	TURNATIP KIT	Uniform flat spray pattern with tapered edges and fine atomisation.	–	Insert assembly designed to fit the Turnaflo unit.	0,076 – 21,6	H.4
	AIR ASSISTED	Uniform flat spray pattern with tapered edges and fine atomisation.	15° – 110°	Flanged tip designs for use with special air assisted handguns.	0,076 – 21,6	H.5

Contact our Helpline for any special requirements:  
Tel: +44 (0) 151 424 6821  
Fax: +44 (0) 151 495 1043  
e-mail:sales@delavan.co.uk  
Web:www.delavan.co.uk



## FEATURES

- Delavan Carbide Tips are specifically designed and tested for all airless paint spraying applications.
- Design and manufacturing techniques used on the Delavan Airless Tips are based specifically on the industry's need for high performance standards using viscous materials etc.
- Carbide Tips are being used on all types of airless equipment and applications. Continued research assures all users of quality unsurpassed in the industry.
- The Carbide Tip material selected for use is the highest quality, wear resistant material now available.
- Every Airless Tip is checked to ensure calibration, and all other design features are achieved on every Tip before leaving the factory.



## SELECTION GUIDE

- Airless Tip orifices are elliptical in shape. The term "equivalent orifice diameter" refers to a circular orifice diameter which will provide the same flow rates as the elliptical orifice. The equivalent orifice diameter does not indicate the actual orifice dimensions.
- The flow rates of Delavan Airless Tips are given in US GPM based on water at the pressures shown. Capacities would vary to some degree on other liquids.
- The pattern width dimension is the nominal pattern width of each Airless Tip when tested on a coating material of 20 seconds - # 4 Zahn cup viscosity at 1500 PSI at a distance of 12" from the Tip.
- Maximum design pressure is 500 Bar.G.

## CAPACITY CHART

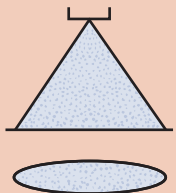
TIP NUMBER	EQUIV. ORIF. (Inches)	PATTERN WIDTH (Inches)	FLOW RATE IN US GPM AT PSIG PRESSURE				PRE-ORIFICE DISC NO.
			500	1000	1500	2000	
C515		3					
C525	0,005	5	0,015	0,02	0,025	0,03	9
C540		7					
C715		3					
C725	0,007	5	0,03	0,04	0,05	0,06	9
C735		6					
C740		7					
C915		3					
C925		5,5					
C940	0,009	7	0,04	0,06	0,067	0,08	9
C950		8,5					
C965		10					
C1115		3					
C1125		5,5					
C1140		7					11
C1150	0,011	8,5	0,06	0,08	0,10	0,12	OR
C1165		10					13
C1180		11,5					
C1315		3					
C1325		5,5					
C1340		8					
C1350	0,013	9	0,09	0,12	0,15	0,18	16
C1365		11					
C1380		13					
C1395		14					
C1515		4					
C1525		6					
C1540		8					
C1550	0,15	10	0,12	0,16	0,20	0,23	16
C1565		12					
C1580		14					
C1595		15,5					

TIP NUMBER	EQUIV. ORIF. (Inches)	PATTERN WIDTH (Inches)	FLOW RATE IN US GPM AT PSIG PRESSURE				PRE-ORIFICE DISC NO.
			500	1000	1500	2000	
C1615		4					
C1625		6					
C1640		8					
C1650	0,016	10	0,14	0,19	0,24	0,28	20
C1665		12					
C1673		14					
C1680		15					
C1695		17					
C1825		6					
C1840		8,5					
C1850	0,018	10	0,18	0,25	0,30	0,36	20
C1865		13					
C1880		15					
C1895		17					
C2025		6					
C2040		8,5					
C2050		10					
C2060	0,020	12	0,20	0,28	0,35	0,40	25
C2065		14					
C2080		16					
C2095		18					
C2125		6					
C2140		8,5					
C2150	0,021	11,5	0,24	0,33	0,41	0,47	25
C2165		15					
C2180		17					
C2195		19					
C2425		7					
C2440		9					
C2450		12					
C2465	0,024	15	0,30	0,42	0,52	0,60	25
C2473		17					
C2480		18,5					
C2495		21					

AIRLESS

AIRLESS TIPS

Contact our Helpline for any special requirements:  
Tel: +44 (0) 151 424 6821  
Fax: +44 (0) 151 495 1043  
e-mail: sales@delavan.co.uk  
Web: www.delavan.co.uk



Coltec Industries



## CAPACITY CHART (CONT.)

TIP NUMBER	EQUIV. ORIF. (Inches)	PATTERN WIDTH (Inches)	FLOW RATE IN US GPM AT PSIG PRESSURE				PRE-ORIFICE DISC NO.	TIP NUMBER	EQUIV. ORIF. (Inches)	PATTERN WIDTH (Inches)	FLOW RATE IN US GPM AT PSIG PRESSURE				PRE-ORIFICE DISC NO.
			500	1000	1500	2000					500	1000	1500	2000	
C2625		7							9						
C2640		9							12						
C2650	0,026	12	0,35	0,50	0,61	0,71	28	0,036	15	0,71	1,0	1,2	1,4	39	
C2665		15							18,5						
C2680		18,5							21,5						
C2695		21						0,041	21,5	0,88	1,2	1,5	1,8	45	
C2925		7							9						
C2940		9							12						
C2950		12						0,043	15	1,1	1,5	1,8	2,1	45	
C2965	0,029	15	0,45	0,63	0,80	0,90	31		18,5						
C2973		17							21,5						
C2980		18,5						0,048	18,5	1,2	1,7	2,1	2,5	55	
C2995		21,5							22						
C3140		9						0,052	9	1,4	2,0	2,4	2,8	55	
C3150		12							15						
C3165	0,031	15	0,53	0,75	0,92	1,1	39	0,062	9	2,1	3,0	3,7	4,2	65	
C3180		18,5							15						
C3195		21,5						0,072	15	2,8	4,0	4,9	5,7	76	
								0,085	15	4,1	5,7	6,7	8,1	76	

# AIRLESS TIPS

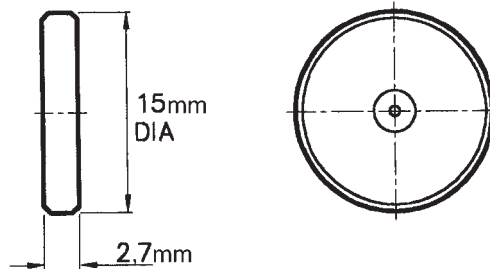
## AIRLESS



### PRE-ORIFICE DISCS

- The spray quality of most airless tips can be improved with the use of a Delavan Pre-Orifice Disc.
- Applications previously considered impractical can now be handled by adding a Delavan Pre-Orifice.
- Substantially lower operating pressures can be used without sacrificing spray quality.
- Larger Airless Tip sizes may be used at lower pressures, resulting in low flow rates without clogging.
- The Pre-Orifice Disc, which is easily installed directly behind the Airless Tip, also serves as a seal, eliminating the need for a separate gasket.
- Pre-Orifice Discs are constructed with a Carbide insert mounted in a Stainless Steel housing.
- Refer to the above chart and that on page H.1 to obtain the recommended Pre-Orifice Disc size.

Contact our Helpline for any special requirements:  
Tel: +44 (0) 151 424 6821  
Fax: +44 (0) 151 495 1043  
e-mail:sales@delavan.co.uk  
Web:www.delavan.co.uk



### ORIFICE DIMENSIONS

DISC NO.	9	11	13	16	20	25	28	31	39	45	55	65	76
ORIFICE DIA. (inches)	0,009	0,011	0,013	0,016	0,020	0,025	0,028	0,031	0,039	0,045	0,055	0,065	0,076

## FEATURES

- The Delavan Turnaflo adaptor provides a quick and easy method for removal of particles blocking the spray tip during operation.
- When spray tip is blocked, turn handle 180°. Flow then reverses through spray tip and flushes out foreign matter.
- Maximum recommended pressure is 4000 PSIG (275 Bar.G.)



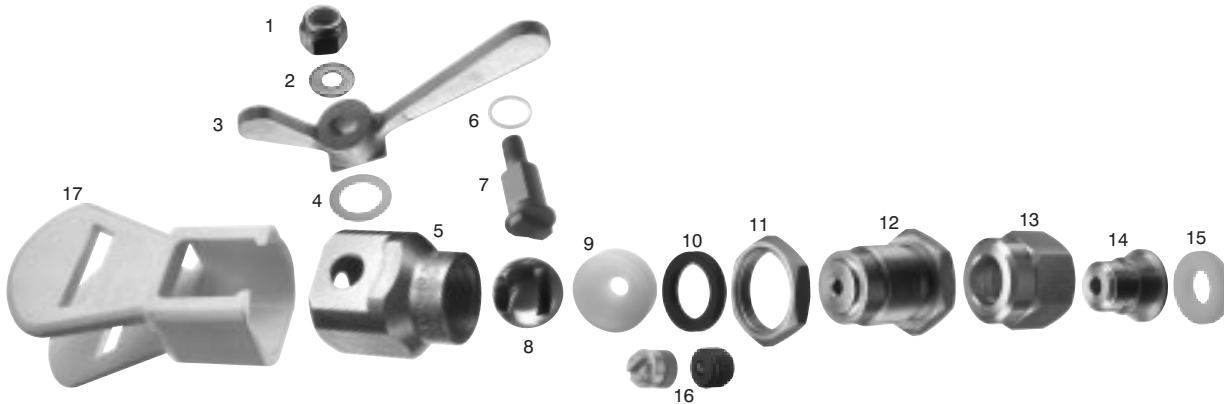
### Parts List

ITEM	DESCRIPTION	PART NUMBER
1	Nut	W01744
2	Nut Washer	W01741
3	Handle	W01468
4	Handle Washer	W01563
5	Body	W01561
6	Drive Shank Washer	W01564
7	Drive Shank	W01560
8	Ball	W01482
9	Ball Gasket	W01086
10	Nu-lip Seal	W00075

### Parts List

ITEM	DESCRIPTION	PART NUMBER
11	Locknut	W00916
12	Seal-Retainer	W00915
13	Cap	See Table Below
14	Connecting Piece	W00747
15	Gasket	See Table Below
16	Turnatip Kit	See Page H.4
17	Safety Guard	W05758
18	Seal Kit	4600 SK*
19	Ball and Seal Kit	4600 BSK*

\* Not illustrated.



## TURNAFLO SELECTION GUIDE

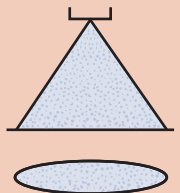
TURNAFLO PART NUMBER	TO FIT GUN TYPE	SCREW CAP THREAD	SREW CAP PART NUMBER	GUN SEALING GASKET
4500 - AG	Speeflo	3/8" NPS	W00056	W06428
4500 - AG	Kremlin	3/8" NPS	W00056	W06428
4500 - AG	Nordson	3/8" NPS	W00056	W06428
4500 - AG	De Vilbiss	3/8" NPS	W00056	W06428
4510 - AG	Graco*	11/16" x 16 UN	W00057	W06428
4510 - AG	Alemite	11/16" x 16 UN	W00057	W06428
4510 - AG	S.S. Co. 24-A & 25A	11/16" x 16 UN	W00057	W06428
4510 - AG	Wagner Super G15	11/16" x 16 UN	W00057	W06428
4510 - AG	Rexson	11/16" x 16 UN	W00057	W06428
4510 - AG	Binks 43	11/16" x 16 UN	W00057	W06428
4520 - AG	Blinks 50	3/4" x 20 UNEF	W00058	W01776
4530 - AG	Graco**	7/8" x 14 NF	W00059	W00064
4540 - AG	S.S. Co. 44A	1" x 14 NF	W00060	W00079
4550 - AG	Atlas Copco	M18 x 1	W01684	W06428
4550 - AG	Bede	M18 x 1	W01684	W06428
4550 - AG	Kopperschmidt	M18 x 1	W01684	W06428
4560 - AG	Iwata	M18 x 1	W01684	W00063
4570 - AG	Aro 651-516	11/16" x 16 UN	W00697	W06428
4580 - AG	-	5/8" BSPP	W01324	W00064
4590 - AG	-	M18 x 1,5	W15151	W06428

\* Attach Turnaflo after removing Airless Tip retaining nut only.  
\*\* Attach Turnaflo after removing filter retainer.

AIRLESS

TURNAFLO

Contact our Helpline for any special requirements:  
Tel: +44 (0) 151 424 6821  
Fax: +44 (0) 151 495 1043  
e-mail:sales@delavan.co.uk  
Web:www.delavan.co.uk



Coltec Industries



# TURNATIP KIT

AIRLESS



## FEATURES

- The Turnatip Kit utilises the same Carbide insert as the Airless Tip but with a Brass housing to fit a Turnaflo adaptor.
- The Brass housing is bonded to the Carbide insert and is slotted in the orifice area. The slot is also utilised for orientation purposes by using a special alignment tool.
- Each Turnatip Kit is supplied with grub screws, for both Delavan and competitive units, and an alignment tool.
- The Turnatip number is stamped on the Brass housing for ease of identification e.g.D2.
- The Turnatip is flow tested and pattern width checked in the same way as the Airless Tip.

## TURNATIP KIT CONTENTS

- Turnatip size as per order.
- W00126 - Hardened Steel safety grub screws for use with Turnaflo.
- W00127 - Hardened Steel safety grub screws for use with competitive units.
- W00761 - Turnatip alignment tool.

## ORDER EXAMPLE

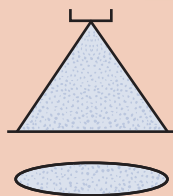
Turnatip Kit P4.

TURNATIP NUMBER	AIRLESS TIP REF.	EQUIV. ORIFICE (INCHES)	PATTERN WIDTH (INCHES)	FLOW RATE*
X-2	C515		3	
X-3	C525	0,005	5	0,02
X-4	C540		7	
A-2	C715		3	
A-3	C725	0,007	5	0,4
A-4	C735		6	
A-5	C740		7	
B-2	C915		3	
B-3	C925		5,5	
B-4	C940	0,009	7	0,06
B-5	C950		8,5	
B-6	C965		10	
C-2	C1115		3	
C-3	C1125		5,5	
C-4	C1140	0,011	7	0,08
C-5	C1150		8,5	
C-6	C1165		10	
C-7	C1180		11,5	
D-2	C1315		3	
D-3	C1325		5,5	
D-4	C1340		8	
D-5	C1350	0,013	9	0,12
D-6	C1365		11	
D-7	C1380		13	
D-8	C1395		14	
E-2	C1515		4	
E-3	C1525		6	
E-4	C1540		8	
E-5	C1550	0,015	10	0,16
E-6	C1565		12	
E-7	C1580		14	
E-8	C1595		15,5	
F-2	C1615		4	
F-3	C1625	0,016	6	0,19
F-4	C1640		8	
F-5	C1650		10	

TURNATIP NUMBER	AIRLESS TIP REF.	EQUIV. ORIFICE (INCHES)	PATTERN WIDTH (INCHES)	FLOW RATE*
F-6	C1665		12	
F-7	C1673	0,016	14	0,19
F-8	C1680		15	
F-9	C1695		17	
G-2	C1825		6	
G-3	C1840		8,5	
G-4	C1850	0,018	10	0,25
G-5	C1865		13	
G-6	C1880		15	
G-7	C1895		17	
H-2	C2025		6	
H-3	C2040		8,5	
H-4	C2050		10	
H-5	C2060	0,020	12	0,28
H-6	C2065		14	
H-7	C2080		16	
H-8	C2095		18	
J-2	C2125		6	
J-3	C2140		8,5	
J-4	C2150	0,021	11,5	0,33
J-5	C2165		15	
J-6	C2180		17	
J-7	C2195		19	
K-2	C2425		7	
K-3	C2440		9	
K-4	C2450		12	
K-5	C2465	0,024	15	0,42
K-6	C2473		17	
K-7	C2480		18,5	
K-8	C2495		21	
L-2	C2625		7	
L-3	C2640		9	
L-4	C2650	0,026	12	0,50
L-5	C2665		15	
L-6	C2680		18,5	
L-7	C2695		21	

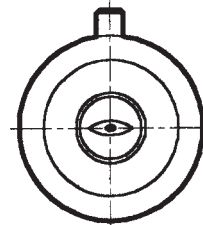
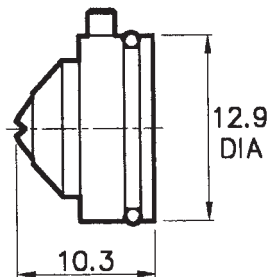
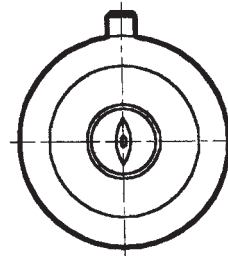
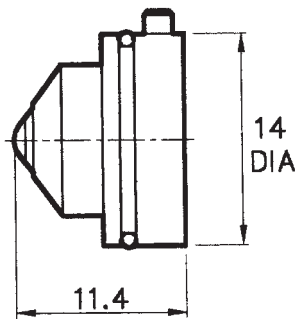
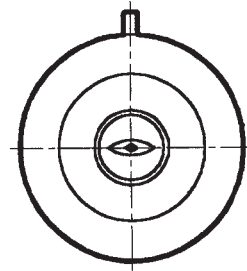
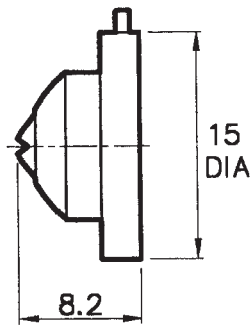
TURNATIP NUMBER	AIRLESS TIP REF.	EQUIV. ORIFICE (INCHES)	PATTERN WIDTH (INCHES)	FLOW RATE*
M-2	C2925		7	
M-3	C2940		9	
M-4	C2950		12	
M-5	C2965	0,029	15	0,63
M-6	C2973		17	
M-7	C2980		18,5	
M-8	C2995		21,5	
N-2	C3140		9	
N-3	C3150		12	
N-4	C3165	0,031	15	0,75
N-5	C3180		18,5	
N-6	C3195		21,5	
P-2	C3640		9	
P-3	C3650		12	
P-4	C3665	0,036	15	1,0
P-5	C3680		18,5	
P-6	C3695		21,5	
P-7	C36110		24	
R-2	C4195	0,041	21,5	1,2
R-3	C4340		9	
R-4	C4350		12	
R-5	C4365	0,043	15	1,5
R-6	C4380		18,5	
R-7	C4395		21,5	
S-2	C4880	0,048	18,5	1,7
S-3	C4895		22	
T-2	C5240	0,052	9	2,0
T-3	C5265		15	
V-3	C6240	0,062	9	3,0
V-4	C6265		15	
W-2	C7265	0,072	15	4,0
W-3	C8565	0,085	15	5,7

Contact our Helpline for any special requirements:  
Tel: +44 (0) 151 424 6821  
Fax: +44 (0) 151 495 1043  
e-mail:sales@delavan.co.uk  
Web:www.delavan.co.uk



\* Flow rates are indicated in US galls/min (water) at an operating pressure of 1000 PSIG (69 Bar.G.).

Delavan manufacture various types of flanged tip assemblies for use with air assisted spray guns. These are supplied with Carbide inserts from our standard range of Airless Tips. The dimensional details of the three current styles are shown below.



Dimensions shown are in mm.

AIRLESS

# TYPE AIR ASSISTED

Contact our Helpline for any special requirements:  
Tel: +44 (0) 151 424 6821  
Fax: +44 (0) 151 495 1043  
e-mail: sales@delavan.co.uk  
Web: www.delavan.co.uk

