



Dela-Fit

WELCOME TO DELAVAN

Meeting the **challenges**
of new
industries and *NEW markets*

DF

DELAVAN[®]
Spray Technologies

Dela-Fit is a unique system of quick fitting nozzles of various spray types which allows connection to pipework without the use of spanners.

Nozzle Type	Spray Characteristics	Spray Angles	Basic Features	Flow Range. L/Min @ 3 Bar.G.	Page No.
DFAC	Uniform flat spray pattern with tapered edges.	0° – 90°	Standard and large nozzles with 'chamfaloc' locking mechanism.	3,93 – 79,07	G.1
DFAN	Wide angle deflected flat spray with relatively uniform distribution.	120° Nom.	Standard and large nozzles with 'chamfaloc' locking mechanism.	3,94 – 78,9	G.2
DFAE	Uniformly distributed hollow cone spray with fine to coarse atomisation.	70°	Standard and large nozzles with 'chamfaloc' locking mechanism.	2,4 – 79,0	G.3
DFAF	Uniformly distributed hollow cone spray with fine to coarse atomisation.	110°	Standard and large nozzles with 'chamfaloc' locking mechanism.	2,4 – 79,0	G.4
DFTJ	Evenly distributed deflected flat spray for low pressure impact cleaning.	35°, 40°, 50°	Standard and large nozzles with 'chamfaloc' locking mechanism.	3,9 – 39	G.5
DFBI	Uniformly distributed solid cone spray with fine to coarse atomisation.	47° – 86°	Standard and large nozzles with 'chamfaloc' locking mechanism.	2,65 – 28,89	G.6
DFBN	Uniformly distributed solid cone spray with fine to coarse atomisation.	85° – 128°	Standard and large nozzles with 'chamfaloc' locking mechanism.	2,65 – 26,06	G.7
DFBQ	Uniformly distributed solid cone spray with fine to coarse atomisation.	47° – 86°	Standard and large nozzles with 'chamfaloc' locking mechanism.	2,65 – 28,89	G.8
DFBT	Uniformly distributed solid cone spray with fine to coarse atomisation.	85° – 128°	Standard and large nozzles with 'chamfaloc' locking mechanism.	2,65 – 26,06	G.9
DF BODIES	–	–	Standard and large mating bodies for nozzles with 'chamfaloc' locking mechanism.	–	G.10
AD ADAPTORS	–	–	Standard and large adaptors to fit Dela-Fit bodies to enable threaded nozzles to be used.	–	G.10
FB CAPS BODIES	–	–	Mating bodies and caps with 'chamfaloc' locking mechanism for use with standard flanged nozzles.	–	G.11
SEALS	–	–	EPDM and Viton seals for standard and large Dela-Fit bodies and FB caps.	–	G.11

DELA-FIT

Contact our Helpline for any special requirements:
Tel: +44 (0) 151 424 6821
Fax: +44 (0) 151 495 1043
e-mail:sales@delavan.co.uk
Web:www.delavan.co.uk

SPRAY CHARACTERISTICS

- Produces a uniform, flat spray pattern with soft tapered edges to allow overlapping for even distribution.
- Impact is generally greater with narrower spray angles assuming equal flow rates.

CONSTRUCTION AND MATERIALS

- Available spray angles of 0°, 15°, 25°, 40°, 50°, 65°, 80°, 90°.
- Hexagonal one piece quick attach body.
- Tapered inlet reduces wear and clogging.
- Available in Brass and 316 Stainless Steel.

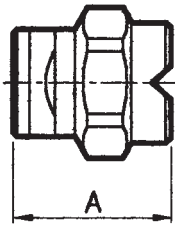
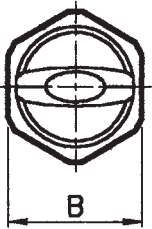
ORDER EXAMPLE

DFAC 20-65° Brass.

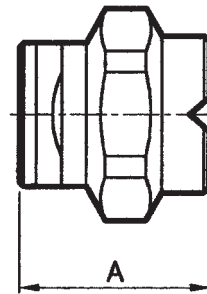
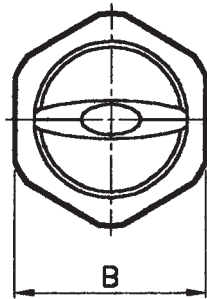


DIMENSIONS (mm)

Nozzle Size	A	B Hex
DFAC STANDARD	21,4	18,0
DFAC LARGE	25,6	25,7



DFAC STANDARD



DFAC LARGE

CAPACITY CHART

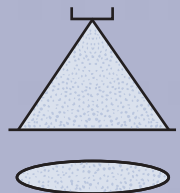
NOZZLE NUMBER	BODY SIZE*		FLOW RATE IN LITRES/MIN AT Bar.G.								
	S	L	0,7	1,0	2,0	3	5	7	10	15	
DFAC 10			1,92	2,28	3,22	3,93	5,1	6,0	7,2	8,84	
DFAC 15			2,84	3,44	4,92	6,16	7,9	9,2	10,7	13,2	
DFAC 20			3,80	4,47	6,26	8,05	10,2	12,4	14,7	17,7	
DFAC 25			4,60	5,80	8,00	9,95	13,0	15,1	18,3	22,3	
DFAC 30			6,00	6,70	9,80	11,84	15,3	17,9	21,4	26,5	
DFAC 40			7,80	9,40	13,00	15,62	20,8	24,3	28,6	35,4	
DFAC 50			9,60	11,60	16,10	19,89	25,4	30,2	36,2	44,1	
DFAC 60			11,40	13,90	19,20	23,67	30,5	36,2	43,4	52,9	
DFAC 70			13,30	16,10	22,80	27,40	36,1	42,6	50,5	61,8	
DFAC 80			15,10	18,80	25,50	31,72	41,2	48,1	57,2	70,6	
DFAC 100			19,20	22,80	31,70	39,3	50,9	60,5	72,4	88,4	
DFAC 120			22,90	27,30	38,90	47,34	61,1	72,4	86,3	106	
DFAC 150			28,80	34,40	48,30	59,19	76,8	90,2	108	132	
DFAC 200			38,00	48,70	64,40	79,07	102	120	144	175	

*S = for use with 1/4" or 3/8" Dela-Fit Bodies. L = for use with 1/2" Dela-Fit Bodies.

DELA-FIT

TYPE DFAC

Contact our Helpline for any special requirements:
Tel: +44 (0) 151 424 6821
Fax: +44 (0) 151 495 1043
e-mail:sales@delavan.co.uk
Web:www.delavan.co.uk



DF

Coltec Industries





SPRAY CHARACTERISTICS

- Produces a wide, flat spray pattern with uniform distribution.
- Low impact spray with low atomisation at low pressures.
- Nominal spray angle is 120° or more depending on size.

CONSTRUCTION AND MATERIALS

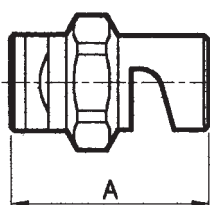
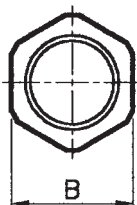
- Hexagonal one piece quick attach body.
- Simple deflector type design producing spray at 75° spray angle from inlet orifice.
- Resistant to clogging.
- Available in Brass and 316 Stainless Steel.

ORDER EXAMPLE

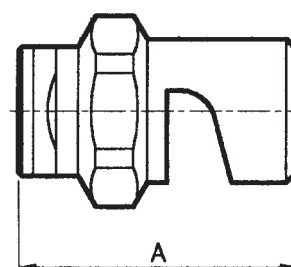
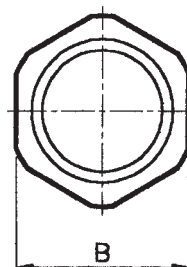
DFAN 10 Stainless Steel.

DIMENSIONS (mm)

Nozzle Size	A	B Hex
DFAN 5-20	29,4	18,0
DFAN 25-40	34,9	18,0
DFAN LARGE	41,3	25,7



DFAN STANDARD



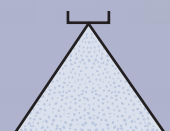
DFAN LARGE

CAPACITY CHART

NOZZLE NUMBER	BODY SIZE*		FLOW RATE IN LITRES/MIN AT Bar.G.							
	S	L	0,35	0,5	0,7	1,0	1,5	2,0	3,0	4,0
DFAN 5			1,33	1,61	1,92	2,28	2,79	3,21	3,94	4,42
DFAN 7,5			2,01	2,40	2,84	3,39	4,36	4,91	5,92	6,70
DFAN 10			2,70	3,23	3,81	4,46	5,49	6,29	7,91	9,38
DFAN 15			4,16	4,99	5,67	6,70	8,24	9,64	11,8	13,8
DFAN 18			5,03	5,70	6,86	8,17	9,94	11,6	14,2	16,4
DFAN 20			5,35	6,56	7,59	8,93	11,0	13,0	15,7	18,3
DFAN 25			6,86	8,09	9,61	11,6	13,8	16,1	16,1	22,8
DFAN 30			8,00	9,70	11,4	13,8	16,6	19,0	23,7	27,2
DFAN 35			9,60	16,6	13,3	15,6	19,4	22,7	27,5	32,1
DFAN 40			10,6	12,7	15,2	18,3	22,4	25,7	31,5	36,4
DFAN 50			13,3	16,2	19,0	22,7	28,0	32,0	39,4	46,4
DFAN 60			16,0	19,2	22,9	27,2	33,6	38,7	47,3	54,6
DFAN 75			20,2	24,2	28,6	34,2	41,8	48,3	59,2	68,4
DFAN 80			21,3	25,9	30,5	36,4	44,6	51,3	63,1	72,9
DFAN 100			27,0	32,3	38,1	45,4	55,6	64,3	78,9	91,1

*S = for use with 1/4" or 3/8" Dela-Fit Bodies. L = for use with 1/2" Dela-Fit Bodies.

Contact our Helpline for any special requirements:
Tel: +44 (0) 151 424 6821
Fax: +44 (0) 151 495 1043
e-mail: sales@delavan.co.uk
Web: www.delavan.co.uk



www.delavan.co.uk

DF

Coltec Industries



SPRAY CHARACTERISTICS

- Uniform hollow cone spray pattern.
- Atomisation becomes finer at higher pressures.
- Spray angle is 70°.

CONSTRUCTION AND MATERIALS

- Right angle configuration, quick attach body with no internal vanes.
- Unique swirl chamber with single inlet and large passageways to provide a more uniform spray and to reduce chances of clogging.
- Available in Brass and 316 Stainless Steel.

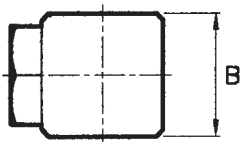
ORDER EXAMPLE

DFAE 20 Brass.

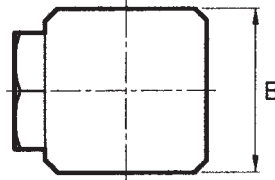
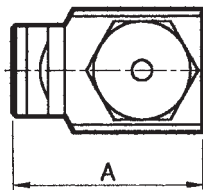


DIMENSIONS (mm)

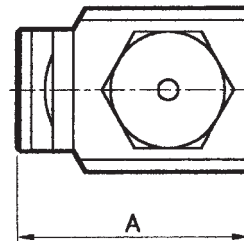
Nozzle Size	A	B Sq
DFAE STANDARD	30,0	19,0
DFAE LARGE	36,5	25,4



DFAE STANDARD



DFAE LARGE



CAPACITY CHART

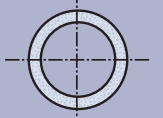
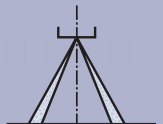
NOZZLE NUMBER	BODY SIZE*		FLOW RATE IN LITRES/MIN AT Bar.G.							
	S	L	0,7	1,0	2,0	3,0	4,0	5,0	6,0	7,0
DFAE 6			1,14	1,3	1,9	2,4	2,7	3,1	3,4	3,6
DFAE 10			1,92	2,3	3,2	3,9	4,6	5,1	5,6	6,0
DFAE 15			2,84	3,4	4,8	5,9	6,8	7,6	8,4	9,0
DFAE 20			3,80	4,5	6,4	7,9	9,1	10,2	11,2	12,1
DFAE 25			4,76	5,7	8,1	9,9	11,4	12,7	14,0	15,1
DFAE 30			5,72	6,9	9,7	11,8	13,7	15,3	16,8	18,1
DFAE 40			7,60	9,1	12,9	15,8	18,2	20,4	22,3	24,1
DFAE 50			9,51	11,4	16,1	19,7	22,8	25,5	27,9	30,2
DFAE 60			11,44	13,6	19,3	23,7	27,3	30,6	33,5	36,2
DFAE 80			15,23	18,2	25,8	31,6	36,5	40,8	44,7	48,2
DFAE 100			19,08	22,8	32,2	39,5	45,6	41,0	55,8	60,3
DFAE 125			23,84	28,5	40,3	49,4	57,0	63,7	69,8	75,4
DFAE 150			28,59	34,2	48,3	59,2	68,4	76,4	83,7	90,5
DFAE 200			38,16	45,6	64,5	79,0	91,2	102	112	122

*S = for use with 1/4" or 3/8" Dela-Fit Bodies. L = for use with 1/2" Dela-Fit Bodies.

DELA-FIT

TYPE DFAE

Contact our Helpline for any special requirements:
Tel: +44 (0) 151 424 6821
Fax: +44 (0) 151 495 1043
e-mail:sales@delavan.co.uk
Web:www.delavan.co.uk



DF

Coltec Industries





SPRAY CHARACTERISTICS

- Uniform wide angle hollow cone spray pattern.
- Atomisation becomes finer at higher pressures.
- Spray angle is 110°.

CONSTRUCTION AND MATERIALS

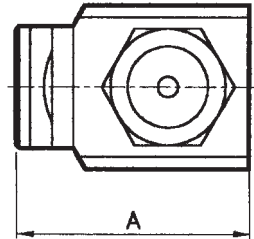
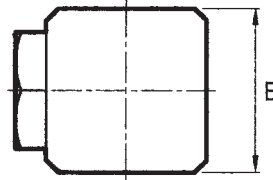
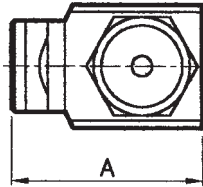
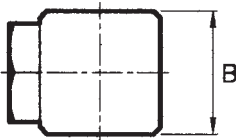
- Right angle configuration, quick attach body with no internal vanes.
- Unique swirl chamber with single inlet and large passageways to provide a more uniform spray and to reduce chances of clogging.
- Available in Brass and 316 Stainless Steel.

ORDER EXAMPLE

DFAF 50 Stainless Steel.

DIMENSIONS (mm)

Nozzle Size	A	B Sq
DFAF STANDARD	30,0	19,0
DFAF LARGE	36,5	25,4



DFAF STANDARD

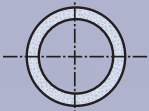
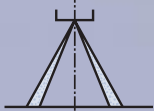
DFAF LARGE

CAPACITY CHART

NOZZLE NUMBER	BODY SIZE*		FLOW RATE IN LITRES/MIN AT Bar.G.							
	S	L	0,7	1,0	2,0	3,0	4,0	5,0	6,0	7,0
DFAF 6			1,14	1,3	1,9	2,4	2,7	3,1	3,4	3,6
DFAF 10			1,92	2,3	3,2	3,9	4,6	5,1	5,6	6,0
DFAF 15			2,84	3,4	4,8	5,9	6,8	7,6	8,4	9,0
DFAF 20			3,80	4,5	6,4	7,9	9,1	10,2	11,2	12,1
DFAF 25			4,76	5,7	8,1	9,9	11,4	12,7	14,0	15,1
DFAF 30			5,72	6,9	9,7	11,8	13,7	15,3	16,8	18,1
DFAF 40			7,60	9,1	12,9	15,8	18,2	20,4	22,3	24,1
DFAF 50			9,51	11,4	16,1	19,7	22,8	25,5	27,9	30,2
DFAF 60			11,44	13,6	19,3	23,7	27,3	30,6	33,5	36,2
DFAF 80			15,23	18,2	25,8	31,6	36,5	40,8	44,7	48,2
DFAF 100			19,08	22,8	32,2	39,5	45,6	41,0	55,8	60,3
DFAF 125			23,84	28,5	40,3	49,4	57,0	63,7	69,8	75,4
DFAF 150			28,59	34,2	48,3	59,2	68,4	76,4	83,7	90,5
DFAF 200			38,16	45,6	64,5	79,0	91,2	102	112	122

*S = for use with 1/4" or 3/8" Dela-Fit Bodies. L = for use with 1/2" Dela-Fit Bodies.

Contact our Helpline for any special requirements:
Tel: +44 (0) 151 424 6821
Fax: +44 (0) 151 495 1043
e-mail:sales@delavan.co.uk
Web:www.delavan.co.uk



DF

Coltec Industries



SPRAY CHARACTERISTICS

- Flat, high impact spray pattern.

CONSTRUCTION AND MATERIALS

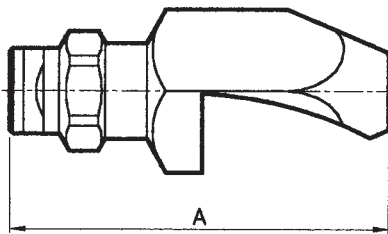
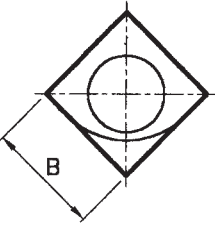
- Circular orifice with tapered inlet to reduce plugging.
- Maximum impact for any given pressure due to deflector design.
- Available in Brass and 316 Stainless Steel.

ORDER EXAMPLE

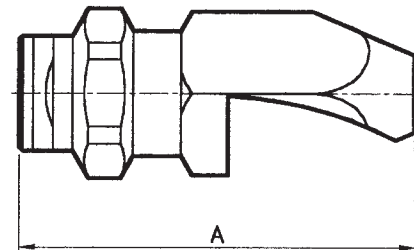
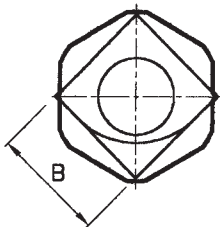
DFTJ 50-40° Brass.

DIMENSIONS (mm)

Nozzle Size	A	B Sq
DFTJ 10	31,0	15,9
DFTJ 20-40	73,0	25,4
DFTJ 50-60	72,2	25,4
DFTJ 80-100	88,9	31,8



DFTJ STANDARD



DFTJ LARGE

CAPACITY CHART

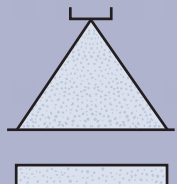
NOZZLE NUMBER	BODY SIZE*		SPRAY ANGLES (°)			FLOW RATE IN LITRES/MIN AT Bar.G.						
	S	L	35	40	50	1	1,5	2	3	4	5	7
DFTJ 10						2,3	2,25	3,2	3,9	4,5	5,0	6,00
DFTJ 20						4,5	5,5	6,4	7,8	9,0	10,0	11,9
DFTJ 25						5,6	6,9	8,0	9,8	11,3	12,6	14,9
DFTJ 30						6,8	8,30	9,6	11,7	13,5	15,1	17,9
DFTJ 40						9,0	11,0	12,8	15,6	18,0	20,0	24,0
DFTJ 50						11,3	14,0	16,0	19,5	23,0	25	30,0
DFTJ 60						13,5	16,5	19,2	23	27	30	36,00
DFTJ 80						18,1	22,0	26	31	36	40	48,00
DFTJ 100						23,0	27,5	32	39	45	50	60,00

*S = for use with 1/4" or 3/8" Dela-Fit Bodies. L = for use with 1/2" Dela-Fit Bodies.

DELA-FIT

TYPE DFTJ

Contact our Helpline for any special requirements:
Tel: +44 (0) 151 424 6821
Fax: +44 (0) 151 495 1043
e-mail:sales@delavan.co.uk
Web:www.delavan.co.uk



DF

Coltec Industries





SPRAY CHARACTERISTICS

- Uniform distribution of droplets in a solid cone spray pattern.
- Droplet size is larger than in hollow cone nozzles of equal capacity.
- Impact is generally greater with narrower spray angles, assuming the same flow rate. Pressure increases affect spray angles.

CONSTRUCTION AND MATERIALS

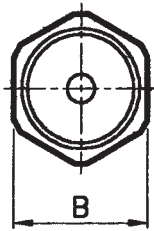
- Hexagonal one piece quick attach body and cross-milled core.
- Core imparts the necessary swirl to produce a solid cone spray pattern.
- Available in Brass and 316 Stainless Steel.

ORDER EXAMPLE

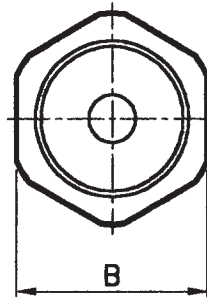
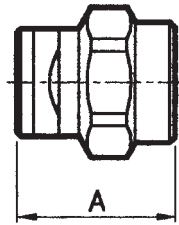
DFBI 49 Stainless Steel.

DIMENSIONS (mm)

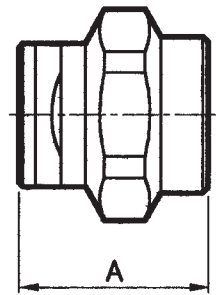
Nozzle Size	A	B Hex
DFBI STANDARD	21,4	18,0
DFBI LARGE	28,6	25,7



DFBI STANDARD



DFBI LARGE

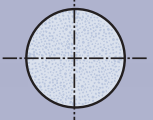
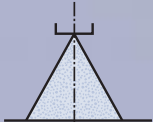


CAPACITY CHART

NOZZLE NUMBER	BODY SIZE*		FLOW RATES IN LITRES/MIN AT Bar.G.								SPRAY ANGLE (°) @ 2 Bar.G.
	S	L	0,7	1	1,5	2	3	4	6	7	
DFBI 6			1,25	1,50	1,88	2,18	2,65	2,87	3,41	3,54	47
DFBI 8			1,86	2,28	2,84	3,23	4,00	4,55	5,38	5,72	56
DFBI 11			2,32	2,87	3,62	4,05	4,87	5,36	6,30	6,74	64
DFBI 12			2,79	3,41	4,09	4,55	5,30	5,91	7,02	7,58	70
DFBI 16			3,58	4,41	5,30	6,14	7,27	8,00	9,51	10,04	60
DFBI 20			4,46	5,46	6,50	7,54	9,06	10,00	11,92	12,63	73
DFBI 22			5,11	6,24	7,51	8,32	9,78	10,91	13,23	14,24	80
DFBI 27			6,04	7,42	9,01	10,10	12,32	13,64	16,06	17,47	53
DFBI 32			7,25	8,88	10,81	12,32	14,44	15,96	19,29	20,40	70
DFBI 42			9,67	11,82	14,44	15,96	19,29	21,41	24,95	27,37	76
DFBI 47			10,61	13,03	14,95	17,78	21,11	23,63	28,38	30,20	57
DFBI 49			11,62	14,24	16,36	18,69	23,13	25,05	29,29	32,52	86
DFBI 63			14,44	17,07	20,50	23,84	28,89	32,22	38,48	41,31	69

*S = for use with 1/4" or 3/8" Dela-Fit Bodies. L = for use with 1/2" Dela-Fit Bodies.

Contact our Helpline for any special requirements:
Tel: +44 (0) 151 424 6821
Fax: +44 (0) 151 495 1043
e-mail:sales@delavan.co.uk
Web:www.delavan.co.uk



DF

Coltec Industries



SPRAY CHARACTERISTICS

- Uniform distribution of droplets in a wide angle solid cone spray pattern.
- Droplet size is larger than in hollow cone nozzles of equal capacity.
- Pressure increases affect spray angles.

CONSTRUCTION AND MATERIALS

- Hexagonal one piece quick attach body and cross-milled core.
- Core imparts the necessary swirl to produce a solid cone spray pattern.
- Available in Brass and 316 Stainless Steel.

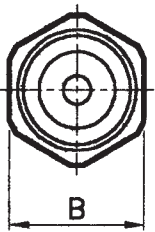
ORDER EXAMPLE

DFBN 59 Stainless Steel.

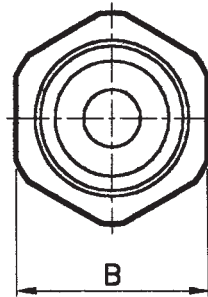
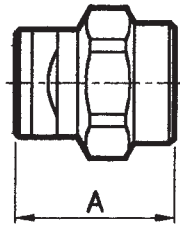


DIMENSIONS (mm)

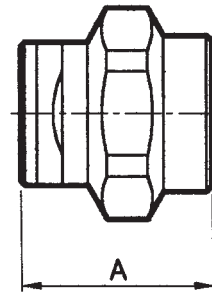
Nozzle Size	A	B Hex
DFBN STANDARD	21,4	18,0
DFBN LARGE	28,6	25,7



DFBN STANDARD



DFBN LARGE



CAPACITY CHART

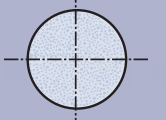
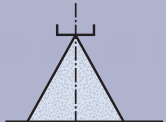
NOZZLE NUMBER	BODY SIZE*		FLOW RATE IN LITRES/MIN AT Bar.G.								SPRAY ANGLE (°) @ 2 Bar.G.
	S	L	0,7	1	1,5	2	3	4	6	7	
DFBN 6			1,25	1,50	1,88	2,18	2,65	2,87	3,41	3,54	85
DFBN 8			1,86	2,28	2,84	3,23	4,00	4,55	5,38	5,72	95
DFBN 11			2,79	3,23	3,86	4,31	5,15	5,45	6,73	7,34	120
DFBN 15			3,67	4,50	5,26	5,59	6,64	7,24	8,70	9,16	110
DFBN 18			4,40	5,39	6,30	6,70	7,96	8,68	10,43	10,98	120
DFBN 22			5,58	6,84	8,0	8,50	10,10	11,01	13,23	13,94	110
DFBN 25			6,04	7,24	8,43	9,32	11,01	12,32	14,65	15,76	120
DFBN 32			7,70	9,15	10,80	11,92	14,30	15,78	18,90	19,90	110
DFBN 39			9,40	11,15	13,14	14,52	17,40	19,20	23,00	24,25	120
DFBN 46			11,62	13,64	15,86	17,27	19,29	22,32	25,45	27,88	112
DFBN 48			12,52	15,25	16,87	18,18	23,13	24,54	29,80	32,52	120
DFBN 59			13,23	15,96	19,29	22,32	26,06	28,18	34,64	37,67	128

*S = for use with 1/4" or 3/8" Dela-Fit Bodies. L = for use with 1/2" Dela-Fit Bodies.

DELA-FIT

TYPE DFBN

Contact our Helpline for any special requirements:
Tel: +44 (0) 151 424 6821
Fax: +44 (0) 151 495 1043
e-mail:sales@delavan.co.uk
Web:www.delavan.co.uk



DF

Coltec Industries





SPRAY CHARACTERISTICS

- Uniform distribution of droplets in a solid cone square shaped spray pattern.
- Droplet size is larger than in hollow cone nozzles of equal capacity.
- Impact is generally greater with narrower spray angles, assuming the same flow rate. Pressure increases affect spray angles.

CONSTRUCTION AND MATERIALS

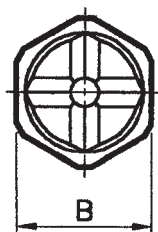
- Hexagonal one piece quick attach body and cross-milled core.
- Core imparts the necessary swirl to produce a solid spray pattern.
- Available in Brass and 316 Stainless Steel.

ORDER EXAMPLE

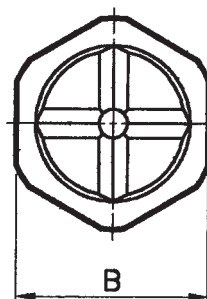
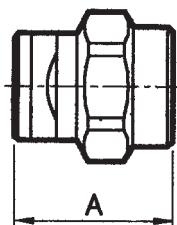
DFBQ 16 Brass.

DIMENSIONS (mm)

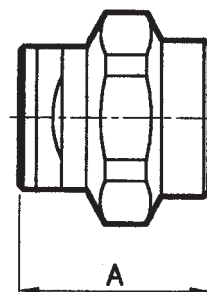
Nozzle Size	A	B Hex
DFBQ STANDARD	21,4	18,0
DFBQ LARGE	28,6	25,7



DFBQ STANDARD



DFBQ LARGE

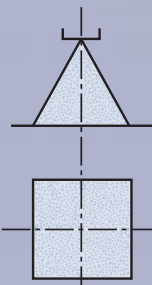


CAPACITY CHART

NOZZLE NUMBER	BODY SIZE*		FLOW RATE IN LITRES/MIN AT Bar.G.								SPRAY ANGLE (°) 3
	S	L	0,7	1	1,5	2	3	4	6	7	
DFBQ 6			1,25	1,50	1,88	2,18	2,65	2,87	3,41	3,54	47
DFBQ 8			1,86	2,28	2,84	3,23	4,00	4,55	5,38	5,72	56
DFBQ 11			2,32	2,87	3,62	4,05	4,87	5,36	6,30	6,74	64
DFBQ 12			2,79	3,41	4,09	4,55	5,30	5,91	7,02	7,58	70
DFBQ 16			3,58	4,41	5,30	6,14	7,27	8,00	9,51	10,04	60
DFBQ 20			4,46	5,46	6,50	7,54	9,06	10,00	11,92	12,63	73
DFBQ 22			5,11	6,24	7,51	8,32	9,78	10,91	13,23	14,24	80
DFBQ 27			6,04	7,42	9,01	10,10	12,32	13,64	16,06	17,47	53
DFBQ 32			7,25	8,88	10,81	12,32	14,44	15,96	19,29	20,40	70
DFBQ 42			9,67	11,82	14,44	15,96	19,29	21,41	24,95	27,37	76
DFBQ 47			10,61	13,03	14,95	17,78	21,11	23,63	28,38	30,20	57
DFBQ 49			11,62	14,24	16,36	18,69	23,13	25,05	29,29	32,52	86
DFBQ 63			14,44	17,07	20,50	23,84	28,89	32,22	38,48	41,31	69

*S = for use with 1/4" or 3/8" Dela-Fit Bodies. L = for use with 1/2" Dela-Fit Bodies.

Contact our Helpline for any special requirements:
Tel: +44 (0) 151 424 6821
Fax: +44 (0) 151 495 1043
e-mail: sales@delavan.co.uk
Web: www.delavan.co.uk



DF

Coltec Industries



SPRAY CHARACTERISTICS

- Uniform distribution of droplets in a wide angle solid cone square shaped spray pattern.
- Droplet size is larger than in hollow cone nozzles of equal capacity.
- Pressure increases affect spray angles.

CONSTRUCTION AND MATERIALS

- Hexagonal one piece quick attach body and cross-milled core.
- Core imparts the necessary swirl to produce a solid spray pattern.
- Available in Brass and 316 Stainless Steel.

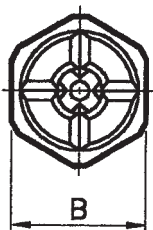
ORDER EXAMPLE

DFBT 25 Brass.

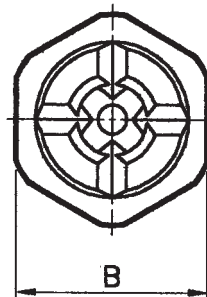
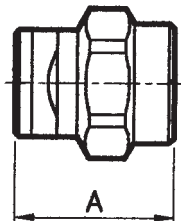


DIMENSIONS (mm)

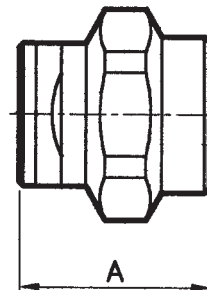
Nozzle Size	A	B Hex
DFBT STANDARD	21,4	18,0
DFBT LARGE	28,6	25,7



DFBT STANDARD



DFBT LARGE



CAPACITY CHART

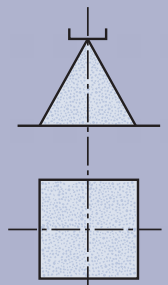
NOZZLE NUMBER	BODY SIZE*		FLOW RATE IN LITRES/MIN AT Bar.G.								SPRAY ANGLE (°) @ 2 Bar.G.
	S	L	0,7	1	1.5	2	3	4	6	7	
DFBT 6			1,25	1,50	1,88	2,18	2,65	2,87	3,41	3,54	85
DFBT 8			1,86	2,28	2,84	3,23	4,00	4,55	5,38	5,72	95
DFBT 11			2,79	3,23	3,86	4,31	5,15	5,45	6,73	7,34	120
DFBT 15			3,67	4,50	5,26	5,59	6,64	7,24	8,70	9,16	110
DFBT 18			4,40	5,39	6,30	6,70	7,96	8,68	10,43	10,98	120
DFBT 22			5,58	6,84	8,0	8,50	10,10	11,01	13,23	13,94	110
DFBT 25			6,04	7,24	8,43	9,32	11,01	12,32	14,65	15,76	120
DFBT 32			7,70	9,15	10,80	11,92	14,30	15,78	18,90	19,90	110
DFBT 39			9,40	11,15	13,14	14,52	17,40	19,20	23,00	24,25	120
DFBT 46			11,62	13,64	15,86	17,27	19,29	22,32	25,45	27,88	112
DFBT 48			12,52	15,25	16,87	18,18	23,13	24,54	29,80	32,52	120
DFBT 59			13,23	15,96	19,29	22,32	26,06	28,18	34,64	37,67	128

*S = for use with 1/4" or 3/8" Dela-Fit Bodies. L = for use with 1/2" Dela-Fit Bodies.

DELA-FIT

TYPE DFBT

Contact our Helpline for any special requirements:
Tel: +44 (0) 151 424 6821
Fax: +44 (0) 151 495 1043
e-mail:sales@delavan.co.uk
Web:www.delavan.co.uk



DF

Coltec Industries





DF BODIES

CHARACTERISTICS

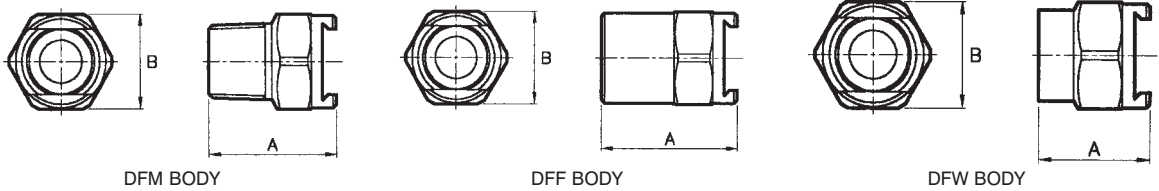
- Dela-Fit bodies are designed to accept any tip from the Dela-Fit range as well as any of the threaded adaptors.

CONSTRUCTION AND MATERIALS

- 1/4", 3/8" and DFW Welding bodies are for nozzles designated 'S' in the nozzle size chart. 1/2" bodies are for nozzles designated 'L'.
- EPDM Seals are Standard, Viton optional.
- Threaded bodies available in Brass and 316 Stainless Steel.
- Welding nipples available in 316 Stainless Steel and Mild Steel.
- Thread sizes are Male BSPT and Female BSPP.

DIMENSIONS (mm)

Body Type	A	B Hex
1/4" DFM (Male)	28,6	20,8
3/8" DFM (Male)	28,6	20,8
1/2" DFM (Male)	36,5	28,0
1/4" DFF (Female)	30,7	20,8
3/8" DFF (Female)	31,0	20,8
1/2" DFF (Female)	34,9	28,0
DFW (Welding)	19,0	20,8
1/2" DFF (Welding)	25,4	28,0



DFM BODY

DFF BODY

DFW BODY

AD ADAPTORS

CHARACTERISTICS

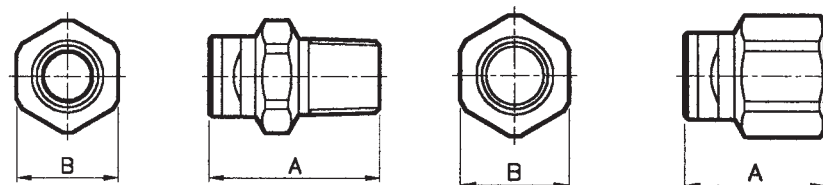
- Adapts standard threaded nozzles, hose fittings or accessories to the Dela-Fit system.
- Can function as quick release couplings.

CONSTRUCTION AND MATERIALS

- Available in Brass and 316 Stainless Steel.
- Thread sizes are Male BSPT and Female BSPP.

DIMENSIONS (mm)

Adaptor Type	A	B Hex
DF x 1/4" ADM (Male)	30,4	18,0
DF x 3/8" ADM (Male)	30,4	18,0
1/2" DF x 1/2" ADM (Male)	38,0	28,0
DF x 1/4" ADF (Female)	23,2	18,0
DF x 3/8" ADF (Female)	26,2	20,8
1/2" DF x 1/2" ADF (Female)	30,5	28,0



DFM ADAPTOR

DFF ADAPTOR

Contact our Helpline for any special requirements:
Tel: +44 (0) 151 424 6821
Fax: +44 (0) 151 495 1043
e-mail:sales@delavan.co.uk
Web:www.delavan.co.uk

FB BODIES

CHARACTERISTICS

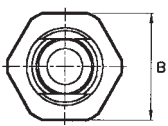
- Designed to accept the FB type cap with the Dela-Fit "Chamfaloc" locking system.

CONSTRUCTION AND MATERIALS

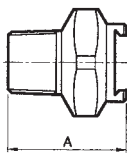
- Available in Brass and 316 Stainless Steel.
- Threaded sizes are Male BSPT and Female BSPP.
- FBW welding nipple is available in 316 Stainless Steel and Mild Steel.

DIMENSIONS (mm)

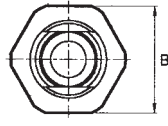
Body Type	A	B Hex
1/4" DFFBM (Male)	28,6	28,0
3/8" DFFBM (Male)	31,6	28,0
1/4" DFFBF Female)	27,8	28,0
3/8" DFFBF (Female)	28,2	28,0
FBW (Welding)	25,4	28,0



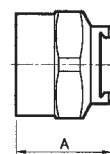
DFFBM BODY



DFFBF BODY



FBW BODY



DFFBF BODY

FB CAPS

CHARACTERISTICS

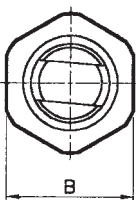
- Allows standard flanged nozzles to be used in the Dela-Fit system.
- FBLF cap is designed to ensure positive alignment of standard flat spray nozzles for correct orientation when overlapping sprays.

CONSTRUCTION AND MATERIALS

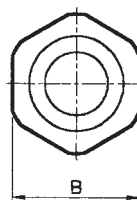
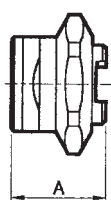
- Available in Brass and 316 Stainless Steel.

DIMENSIONS (mm)

Cap Type	A	B Hex
FBWG	16,3	25,7
FBLF	20,6	25,7



FBLF CAP



FBWG CAP



FBLF CAP



FBWG CAP

SEALS

CHARACTERISTICS

- Allows adequate compression to create a positive seal between the nozzles and bodies.

CONSTRUCTION AND MATERIALS

- EPDM is the standard material. Viton is available as an option.

SEAL PART NUMBERS

Seal Type	EPDM	Viton
1/4" and 3/8" bodies	WO9665-1	WO9665-2
1/2" bodies	WO9666-1	WO9666-2
FB Caps	WO9693-1	WO9693-2



Contact our Helpline for any special requirements:
Tel: +44 (0) 151 424 6821
Fax: +44 (0) 151 495 1043
e-mail:sales@delavan.co.uk
Web:www.delavan.co.uk

DF

Coltec Industries

